

**M25 junction 10/A3 Wisley
interchange
TR010030**

**9.52 Applicant's comments on Surrey
County Council's Deadline 3 submission**

Rule 8(1)(c)(i)

Planning Act 2008

Infrastructure Planning (Examination Procedure) Rules 2010

Volume 9

February 2020

Infrastructure Planning

Planning Act 2008

The Infrastructure Planning (Examination Procedure) Rules 2010 (as amended)

M25 junction 10/A3 Wisley interchange

Development Consent Order 202[x]

9.52 Applicant's Response to Surrey County Council's Deadline 3 submission

Regulation Number:	8 (1)(c)(i)
Planning Inspectorate Scheme Reference	TR010030
Application Document Reference	TR010030/EXAM/9.XX
Author:	M25 junction 10/A3 Wisley interchange project team, Highways England and Atkins

Version	Date	Status of Version
Rev 0	11 February 2020	Deadline 4

Table of contents

1.	Introduction	4
2.	Response to Surrey County Council's letter	5
	Appendix A: Visibility Splay Drawings	8

1. Introduction

- 1.1.1 This document sets out Highways England's comments on the Deadline 3 submission [REP3-035 to REP3-040] Surrey County Council (SCC) (received on 28 January 2020).
- 1.1.2 Where issues raised within the submission have been dealt with previously by Highways England, for instance in response to a question posed by the examining authority in its first round of written questions [REP2-013], in Highways England's comments on written representations [REP2-014] or within one of the application documents or other examination documents, a cross reference to that response or document is provided to avoid unnecessary duplication. The information provided in this document should, therefore, be read in conjunction with the material to which cross references are provided.
- 1.1.3 In order to assist the examining authority, Highways England has not provided comments on every point made by SCC including for example statements which are matters of fact and which it is unnecessary for Highways England to respond to. However, and for the avoidance of doubt, where Highways England has chosen not to comment on matters contained in the response, this should not be taken to be an indication that Highways England agrees with the point or comment raised or opinion expressed.
- 1.1.4 Highways England has chosen to respond to SCC's cover letter [REP3-035], as this provides an overview as to the submission as a whole. Highways England currently has no specific comments to make upon SCC's other submission documents [REP3-036 to REP3-040], beyond those provided in Table 1.1 below.

2. Response to Surrey County Council's letter

Table 1.1- Highways England Response to Surrey County Council

SCC Letter Reference	Written Representation Issue	Highways England Response
1.	<p>Key points from Surrey County Council's oral statements made at the ISH2</p> <p>Detail is provided at Annex A</p> <p>At the ISH2 a planned meeting between Painshill Park Trust, Surrey Fire and Rescue Service and Highways England was referenced. This meeting took place on 23rd January.</p> <p>A summary of feedback provided by Surrey Fire and Rescue Service in relation to emergency access concerns highlights:</p> <p>"Due to the nature and use of the Gothic Tower, the fire service does not have legal authority to require the provision or maintenance of a 2nd vehicular access point to the Tower, however, closure of the A3 access point is likely to have an impact on attendance times of required fire services resources in the event of fire and therefore effect operations."</p> <p>Surrey Fire and Rescue Service will continue to engage on access during the course of the examination.</p>	<p>Highways England attended the aforementioned meeting on 23rd January with Surrey Fire and Rescue Service and Painshill Park Trust and does not dispute the summary provided by Surrey County Council.</p> <p>A detailed response to this issue can be found in document 9.54 Applicant's Comments on Painshill Park Trust's Deadline 4 submission. Highways England will engage with Surrey Fire and Rescue and Painshill Park Trust during the examination.</p>
2.	<p>ISH2 Action Point 3 – information relating to design standard requirements</p> <p>This information is provided at Annex B</p>	<p>Highways England has noted the information provided.</p>
3.	<p>ISH2 Action Point 5 – Junctions where Surrey County Council have specific concerns around visibility splays</p>	<p>In response to Action Point 5, figures have been produced for each of the Local Road Network junctions as listed by Surrey County Council, providing the requested detail to demonstrate that visibility splays for these junctions have been</p>

SCC Letter Reference	Written Representation Issue	Highways England Response
	<p>During the ISH2 Surrey County Council highlighted that there are a number of junctions where officers have concerns around the level of detail that has been provided in relation to visibility splays, namely:</p> <ul style="list-style-type: none"> • Ockham Roundabout sightlines/design speed • Wisley Lane road widths/radii (especially approaching the bridge) and forward visibility • Wisley Lane–sightlines from new bus turnaround • Wisley Lane–sightlines/ design parameters for construction access serving Wisley Airfield Construction compound (SCC acknowledge it is for WPIL to secure a longer term fit for purpose access serving their eventual site) • Elm Lane junction design with Old Lane–Sightlines and forward visibility • A3 northbound off slip to A245 forward visibility • Seven Hills Road south/Felton fleet new access sightlines • A245 n/bound–sightlines to new drainage pond access • A245 n/bound to A3 n/bound jet lane forward visibility. <p>This information has been shared with Highways England.</p>	<p>designed to comply with the appropriate standards (DMRB CD123, DMRB CD109 and Manual for Streets depending on the junction). These figures can be found below in Appendix A.</p> <p>With regard to the junction noted as 'Wisley Lane – sightlines/design parameters for construction access serving Wisley Airfield Construction compound', Highways England has not provided a visibility splay drawing, as it is not proposing a junction at this location as part of the Scheme. Design for a future junction in this location would be the responsibility of the developer of the Wisley Airfield site.</p>
4.	<p>ISH2 Action Point 6 – Strategic Highways assessment for Guildford Local Plan</p> <p>This information is provided at Annex C. A short summary is included at Annex D, which references the impact of the Burnt Common slips.</p>	<p>Highways England has noted the information provided.</p>
5.	<p>ISH2 Action Point 12 – M25 Junction 11 “Gating” Report</p> <p>This information is provided at Annex E.</p>	<p>Highways England has noted the information provided.</p>

SCC Letter Reference	Written Representation Issue	Highways England Response
6.	<p>Statement of Common Ground (SoCG) between Surrey County Council and Highways England</p> <p>The SoCG has been submitted by Highways England. Surrey County Council has worked collaboratively with Highways England to produce a SoCG, which represents respective positions on key issues as at 28th January 2020. The Council will have further comments to input to the SoCG as the examination continues and will continue to work with Highways England to resolve outstanding matters.</p>	<p>A Statement of Common Ground between Surrey County Council and Highways England was submitted to the Examining Authority at Deadline 3 [REP3-012].</p> <p>Highways England and Surrey County Council are continuing to work together to resolve outstanding issues and aim to submit an updated SoCG for consideration at Deadline 5.</p>
7.	<p>Surrey County Council Comments on revised dDCO</p> <p>Issues raised to date on the dDCO are captured within the SoCG between Highways England and Surrey County Council.</p>	<p>Highways England has noted the issues raised and will continue to work with SCC and will provide updates to the draft Development Consent Order (dDCO) in due course.</p>

Appendix A: Visibility Splay Drawings

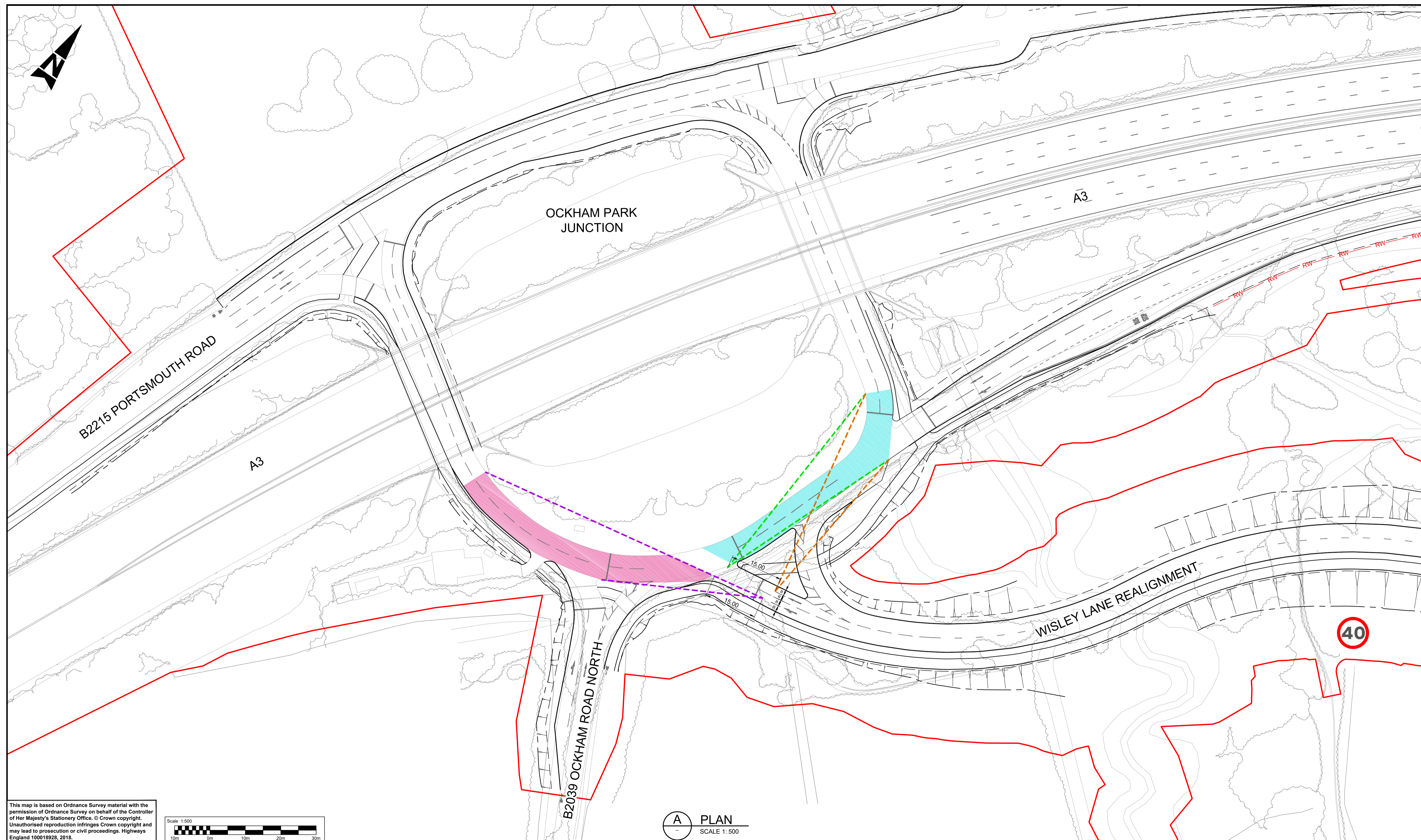
This appendix comprises the following drawings:

- HE551522-ATK-HGN-XX-SK-CH-000033 – Visibility splays from Wisley Lane at Ockham Park junction
- HE551522-ATK-HGN-XX-SK-CH-000034 – Wisley Lane forward visibility and cross section
- HE551522-ATK-HGN-XX-SK-CH-000035 – RHS Garden Wisley bus turnaround junction with Wisley Lane visibility splays
- HE551522-ATK-HGN-XX-SK-CH-000036 – Elm Lane junction with Old Lane visibility splays
- HE551522-ATK-HGN-XX-SK-CH-000037 – A3 northbound off-slip to A245 westbound forward visibility splays
- HE551522-ATK-HGN-XX-SK-CH-000038 – New Feltonfleet access junction with Seven Hills Road South visibility splays
- HE551522-ATK-HGN-XX-SK-CH-000039 – New drainage pond access junction with A245 eastbound visibility splays
- HE551522-ATK-HGN-XX-SK-CH-000040 – A245 eastbound to A3 northbound on-slip forward visibility splays

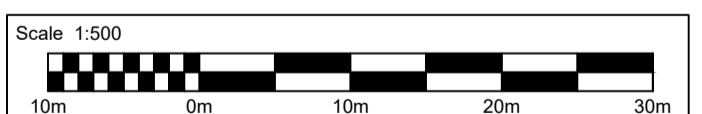
DO NOT SCALE

Millimetres

0 10 100



This map is based on Ordnance Survey material with the permission of Ordnance Survey on behalf of the Controller of Her Majesty's Stationary Office. © Crown copyright. Unauthorised reproduction infringes Crown copyright and may lead to prosecution or civil proceedings. Highways England 100018926, 2018.



A PLAN
SCALE 1: 500

- NOTES:**
- ALL DIMENSIONS ARE IN METRES UNLESS OTHERWISE STATED.
 - ALL VISIBILITY SPLAYS ARE SHOWN IN ACCORDANCE WITH THE DESIGN MANUAL FOR ROADS AND BRIDGES (DMRB) CD 116.
- LEGEND:**
- JUNCTION VISIBILITY SPLAY FOR A ROUNDABOUT ICD >100m IN ACCORDANCE WITH DMRB CD 116.
 - JUNCTION VISIBILITY SPLAY FOR A ROUNDABOUT ICD >100m IN ACCORDANCE WITH DMRB CD 116.
 - JUNCTION VISIBILITY SPLAY FOR A ROUNDABOUT ICD >100m IN ACCORDANCE WITH DMRB CD 116.
 - DCO BOUNDARY.
 - AREA OF CARRIAGEWAY OVER WHICH FORWARD VISIBILITY IS TO BE OBTAINED FOR A DISTANCE OF 70m ALONG CENTRELINE OF THE CIRCULATORY CARRIAGEWAY.
 - AREA OF CARRIAGEWAY OVER WHICH VISIBILITY TO THE RIGHT IS TO BE OBTAINED FOR A DISTANCE OF 70m ALONG CENTRELINE OF THE CIRCULATORY CARRIAGEWAY.

SAFETY, HEALTH AND ENVIRONMENTAL INFORMATION						
In addition to the hazards/risks normally associated with the types of work detailed on this drawing, note the following significant residual risks (Reference shall also be made to the design hazard log).						
Construction NONE						
Maintenance / Cleaning NONE						
Use NONE						
Decommissioning / Demolition NONE						

Description	Status	Revision	Drawn	Checked	Reviewed	Authorised	Issue Date
Construction							
Maintenance / Cleaning							
Use							
Decommissioning / Demolition							
Description SUBMITTED FOR DEADLINE 4							
Status	A1	Revision	C01	Drawn	SB	Checked	LH
				Reviewed	RM	Authorised	GB
						Issue Date	11/02/20

Drawing Suitability: **APPROVED - PUBLISHED** Status: **A1**

ATKINS Epsom Gateway, Ashley Avenue, Epsom, Surrey, KT18 5AL
Tel: +44 (0)1372 726140, Fax: +44 (0)1372 740055, www.atkinsglobal.com

Copyright © Atkins Limited (2018)

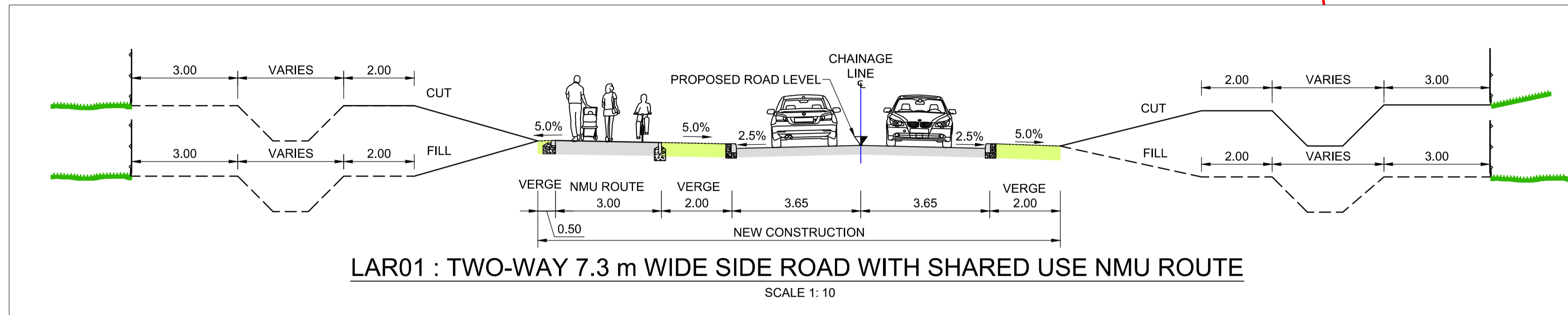
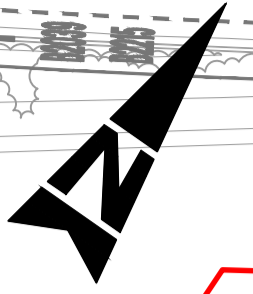
Client: **Working on behalf of highways england**

Project Title M25 junction 10/A3 Wisley interchange	
Drawing Title VISIBILITY SPLAYS FROM WISLEY LANE AT OCKHAM PARK JUNCTION	
Drawing Number HE551522	Originator ATK
Project XX	Volume HGN
- SK - CH - 000033	
Location	Type Role Number
Original Scale: A1	Scale: 1:500 Project Ref. No.: 5158141 Sheet: 1 of 1 Rev: C01

DO NOT SCALE

Millimetres

0 10 100



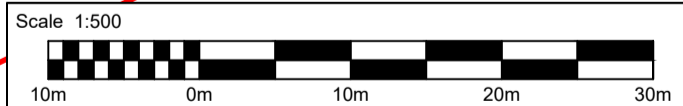
40

30

WISLEY LANE REALIGNMENT

ELM LANE

This map is based on Ordnance Survey material with the permission of Ordnance Survey on behalf of the Controller of Her Majesty's Stationery Office. © Crown copyright. Unauthorised reproduction infringes Crown copyright and may lead to prosecution or civil proceedings. Highways England 100018928, 2018.



A PLAN
SCALE 1:500

NOTES:

- ALL DIMENSIONS ARE IN METRES UNLESS OTHERWISE STATED.
- ALL VISIBILITY SPLAYS ARE SHOWN IN ACCORDANCE WITH THE DESIGN MANUAL FOR ROADS AND BRIDGES (DMRB) CD 109.

LEGEND:

- FORWARD VISIBILITY SPLAY FOR A DESIGN SPEED OF 70kph IN ACCORDANCE WITH DMRB CD 109.
- DCO BOUNDARY

SAFETY, HEALTH AND ENVIRONMENTAL INFORMATION

In addition to the hazards/risks normally associated with the types of work detailed on this drawing, note the following significant residual risks (Reference shall also be made to the design hazard log).

Construction	NONE
Maintenance / Cleaning	NONE
Use	NONE
Decommissioning / Demolition	NONE

Description	Status	Revision	Drawn	Checked	Reviewed	Authorised	Issue Date
Construction							
Maintenance / Cleaning							
Use							
Decommissioning / Demolition							
SUBMITTED FOR DEADLINE 4							
Status	A1	Revision	C01	Drawn	SB	Checked	LH
				Reviewed	RM	Authorised	GB
						Issue Date	11/02/20

Drawing Suitability: **APPROVED - PUBLISHED** Status: **A1**

ATKINS Epsom Gateway, Ashley Avenue, Epsom, Surrey, KT18 5AL. Tel: +44 (0)1372 726140, Fax: +44 (0)1372 740055, www.atkinsglobal.com

SNC-LAVALIN Member of the SNC-Lavalin Group

Copyright © Atkins Limited (2018)

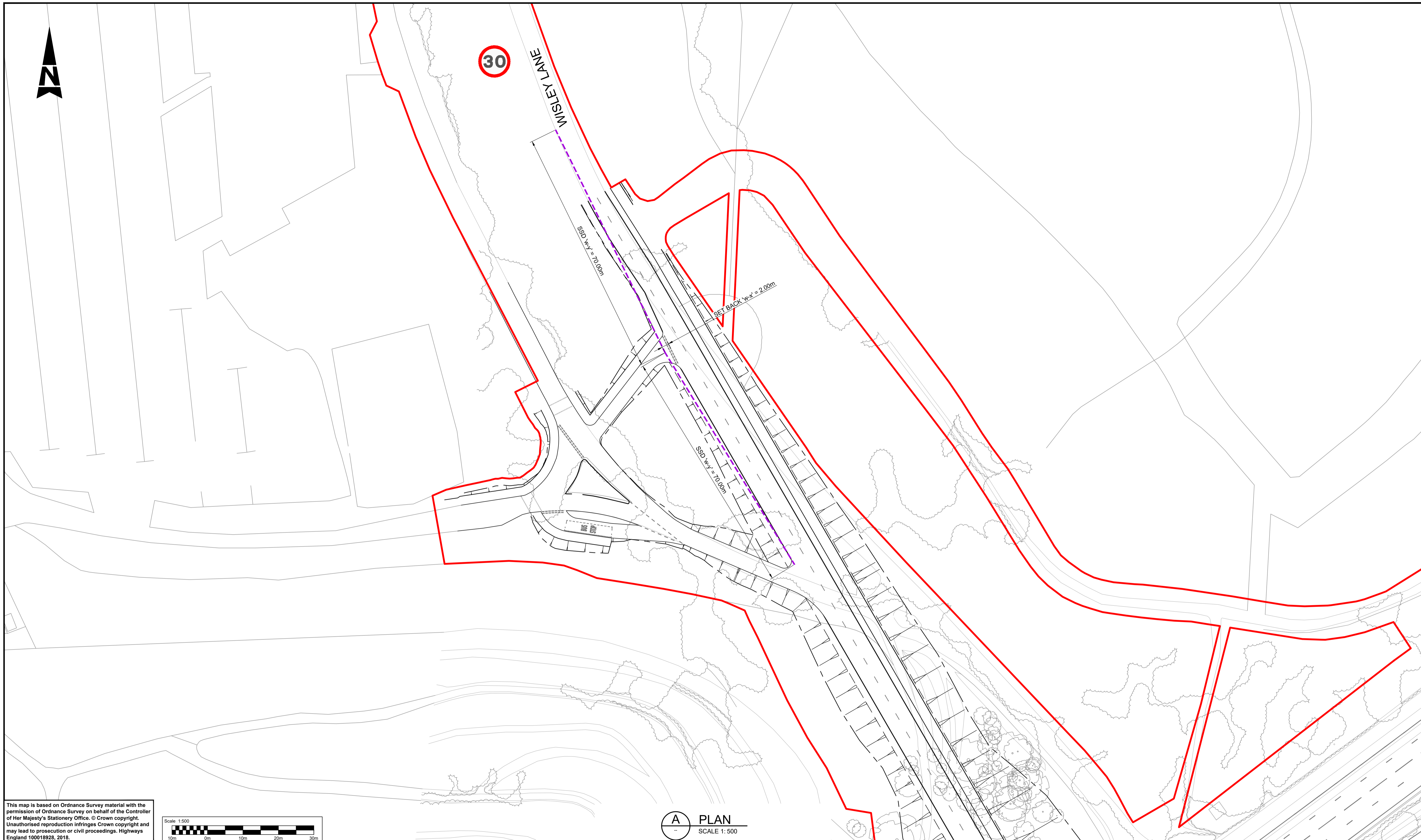
Client: **Working on behalf of highways england**

Project Title:	M25 junction 10/A3 Wisley interchange
Drawing Title:	WISLEY LANE FORWARD VISIBILITY AND CROSS SECTION
Drawing Number:	HE551522 - ATK - HGN - XX
Project Ref. No.:	5158141
Type:	SK - CH - 000034
Volume:	1 of 1
Rev.:	C01

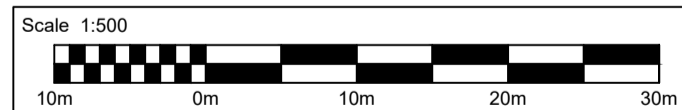
DO NOT SCALE

Millimetres

0 10 100



This map is based on Ordnance Survey material with the permission of Ordnance Survey on behalf of the Controller of Her Majesty's Stationery Office. © Crown copyright. Unauthorised reproduction infringes Crown copyright and may lead to prosecution or civil proceedings. Highways England 100018926, 2018.



A PLAN
SCALE 1:500

NOTES:

- ALL DIMENSIONS ARE IN METRES UNLESS OTHERWISE STATED.
- ALL VISIBILITY SPLAYS ARE SHOWN IN ACCORDANCE WITH THE DESIGN MANUAL FOR ROADS AND BRIDGES (DMRB) CD 123.

LEGEND:

- JUNCTION VISIBILITY SPLAY FOR A DESIGN SPEED OF 50kph IN ACCORDANCE WITH DMRB CD 123.
- DCO BOUNDARY.

SAFETY, HEALTH AND ENVIRONMENTAL INFORMATION

In addition to the hazards/risks normally associated with the types of work detailed on this drawing, note the following significant residual risks (Reference shall also be made to the design hazard log).

Construction

NONE

Maintenance / Cleaning

NONE

Use

NONE

Decommissioning / Demolition

NONE

Description

Status	Revision	Drawn	Checked	Reviewed	Authorised	Issue Date

Description

Status	Revision	Drawn	Checked	Reviewed	Authorised	Issue Date

Description

Status	Revision	Drawn	Checked	Reviewed	Authorised	Issue Date

Description

Status	Revision	Drawn	Checked	Reviewed	Authorised	Issue Date

Description

Status	Revision	Drawn	Checked	Reviewed	Authorised	Issue Date

Description

Status	Revision	Drawn	Checked	Reviewed	Authorised	Issue Date

Description

Status	Revision	Drawn	Checked	Reviewed	Authorised	Issue Date
A1	C01	SB	LH	RM	GB	11/02/20

Drawing Suitability: APPROVED - PUBLISHED

Status: A1

Project Title: M25 junction 10/A3 Wisley interchange

Drawing Title: RHS GARDEN WISLEY BUS TURNAROUND JUNCTION WITH WISLEY LANE VISIBILITY SPLAYS

ATKINS
Epsom Gateway
Ashley Avenue
Epsom
Surrey
KT18 5AL
Tel: +44 (0)1372 726140
Fax: +44 (0)1372 740055
www.atkinsglobal.com

Client: Working on behalf of

highways england

Project: HE551522 - ATK - HGN - XX

Originator: -

Volume: -

Project Ref. No.: 5158141

Sheet: 1 of 1

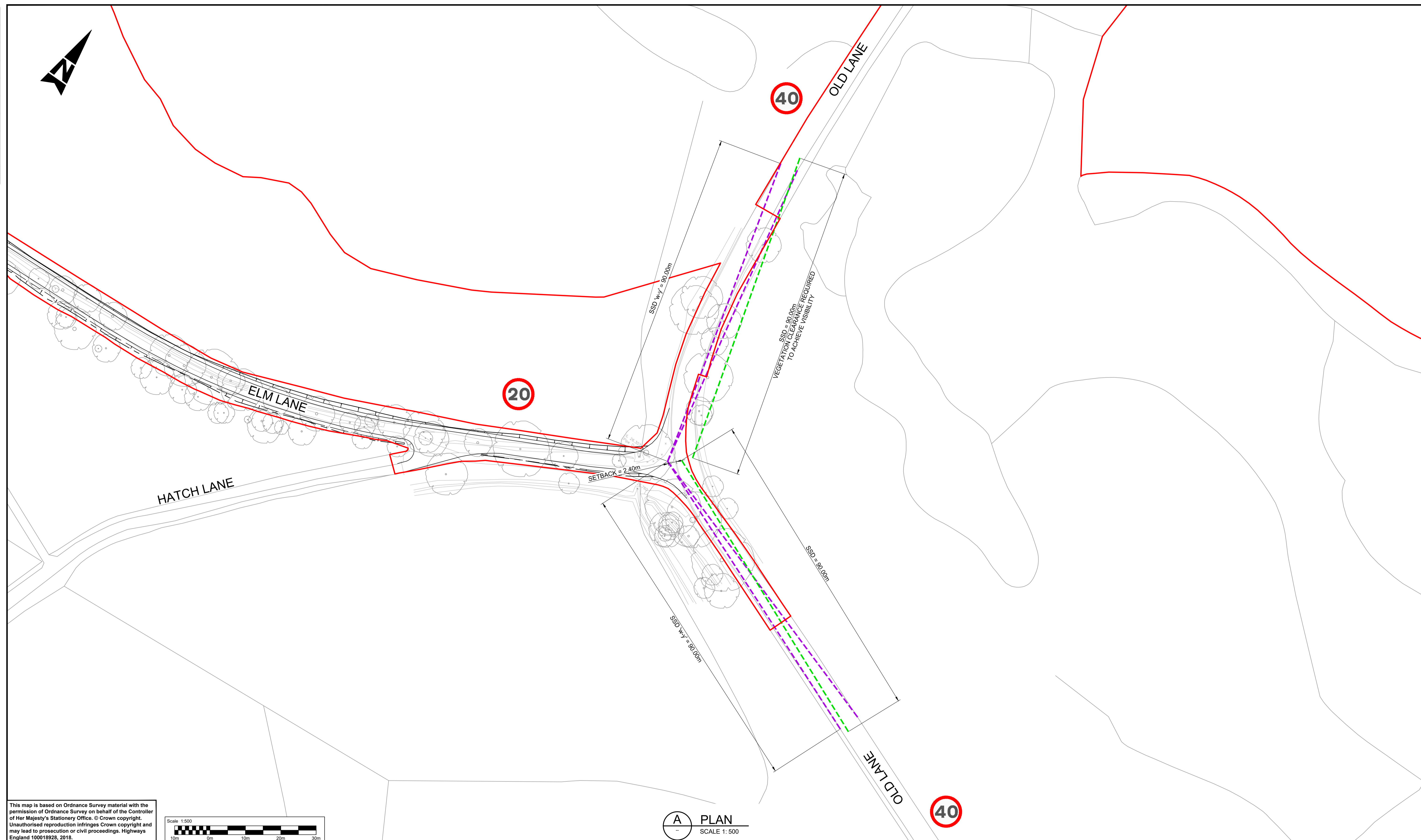
Rev: C01

Scale: 1:500

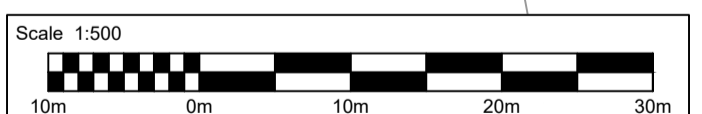
Original Size: A1

DO NOT SCALE

100
0 10
Millimetres



This map is based on Ordnance Survey material with the permission of Ordnance Survey on behalf of the Controller of Her Majesty's Stationary Office. © Crown copyright. Unauthorised reproduction infringes Crown copyright and may lead to prosecution or civil proceedings. Highways England 100018926, 2018.



A PLAN
SCALE 1:500

NOTES:

- ALL DIMENSIONS ARE IN METRES UNLESS OTHERWISE STATED.
- ALL VISIBILITY SPLAYS ARE SHOWN IN ACCORDANCE WITH THE DESIGN MANUAL FOR ROADS AND BRIDGES (DMRB) CD 123 & CD 109.

LEGEND:

- JUNCTION VISIBILITY SPLAY FOR A DESIGN SPEED OF 70kph IN ACCORDANCE WITH DMRB CD 123.
- FORWARD VISIBILITY SPLAY FOR A DESIGN SPEED OF 70kph IN ACCORDANCE WITH DMRB CD 109.
- DCO BOUNDARY.

SAFETY, HEALTH AND ENVIRONMENTAL INFORMATION	
Description	In addition to the hazards/risks normally associated with the types of work detailed on this drawing, note the following significant residual risks (Reference shall also be made to the design hazard log).
Construction	NONE
Maintenance / Cleaning	NONE
Use	NONE
Decommissioning / Demolition	NONE

Description	Status	Revision	Drawn	Checked	Reviewed	Authorised	Issue Date
Submitted for Deadline 4	A1	C01	SB	LH	RM	GB	11/02/20

Drawing Suitability: APPROVED - PUBLISHED

Status: A1

Project Title: M25 junction 10/A3 Wisley interchange

ATKINS
Epsom Gateway
Ashley Avenue
Epsom
Surrey
KT18 5AL
Tel: +44 (0)1372 726140
Fax: +44 (0)1372 740055
www.atkinsglobal.com

Copyright © Atkins Limited (2018)

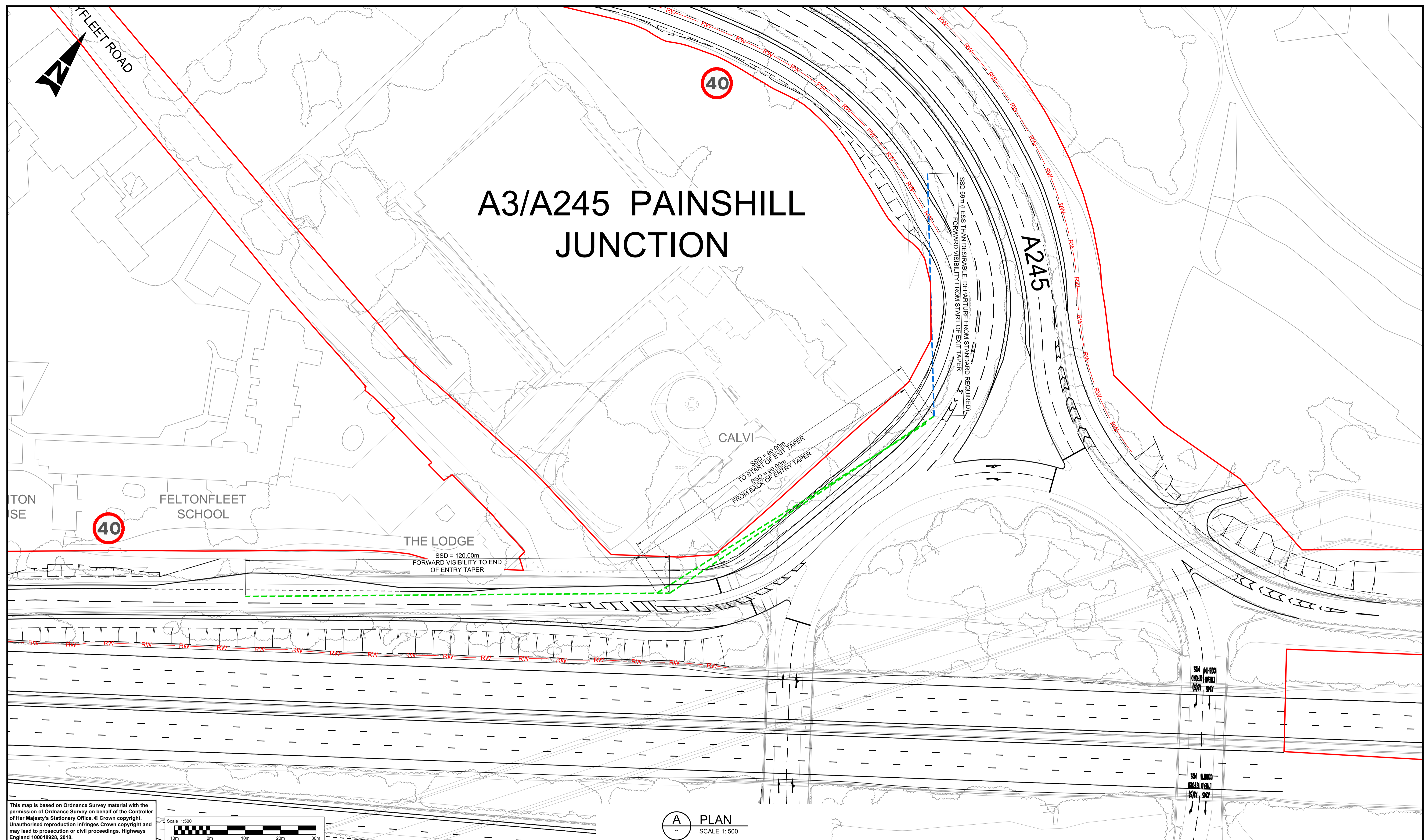
Client: Working on behalf of **highways england**

Drawing Number	HE551522	Originator	ATK	Volume	HGN
Project	XX	Type	SK	Role	CH
Location	- SK - CH - 000036				
Original Size	A1	Scale	1:500	Project Ref. No.	5158141
Sheet	1 of 1	Rev.	C01		

DO NOT SCALE

Millimetres

0 10 100



This map is based on Ordnance Survey material with the permission of Ordnance Survey on behalf of the Controller of Her Majesty's Stationary Office. © Crown copyright. Unauthorised reproduction infringes Crown copyright and may lead to prosecution or civil proceedings. Highways England 100018928, 2018.

A PLAN
SCALE 1:500

NOTES:

- ALL DIMENSIONS ARE IN METRES UNLESS OTHERWISE STATED.
- ALL VISIBILITY SPLAYS ARE SHOWN IN ACCORDANCE WITH THE DESIGN MANUAL FOR ROADS AND BRIDGES (DMRB) CD 109 & CD 116.

LEGEND:

- FORWARD VISIBILITY SPLAY FOR A DESIGN SPEED OF 70kph IN ACCORDANCE WITH DMRB CD 109 & CD 116.
- FORWARD VISIBILITY ACHIEVED - LESS THAN DESIRABLE. DEPARTURE FROM STANDARD REQUIRED.
- DCO BOUNDARY

SAFETY, HEALTH AND ENVIRONMENTAL INFORMATION						
In addition to the hazards/risks normally associated with the types of work detailed on this drawing, note the following significant residual risks (Reference shall also be made to the design hazard log).						
Construction NONE						
Maintenance / Cleaning NONE						
Use NONE						
Decommissioning / Demolition NONE						

Description	Status	Revision	Drawn	Checked	Reviewed	Authorised	Issue Date
Construction							
Maintenance / Cleaning							
Use							
Decommissioning / Demolition							

Drawing Suitability: **APPROVED - PUBLISHED**

Status: **A1**

Project Title: **M25 junction 10/A3 Wisley interchange**

ATKINS
Epsom Gateway
Ashley Avenue
Epsom
Surrey
KT18 5AL
Tel: +44 (0)1372 726140
Fax: +44 (0)1372 740055
www.atkinsglobal.com

Copyright © Atkins Limited (2018)

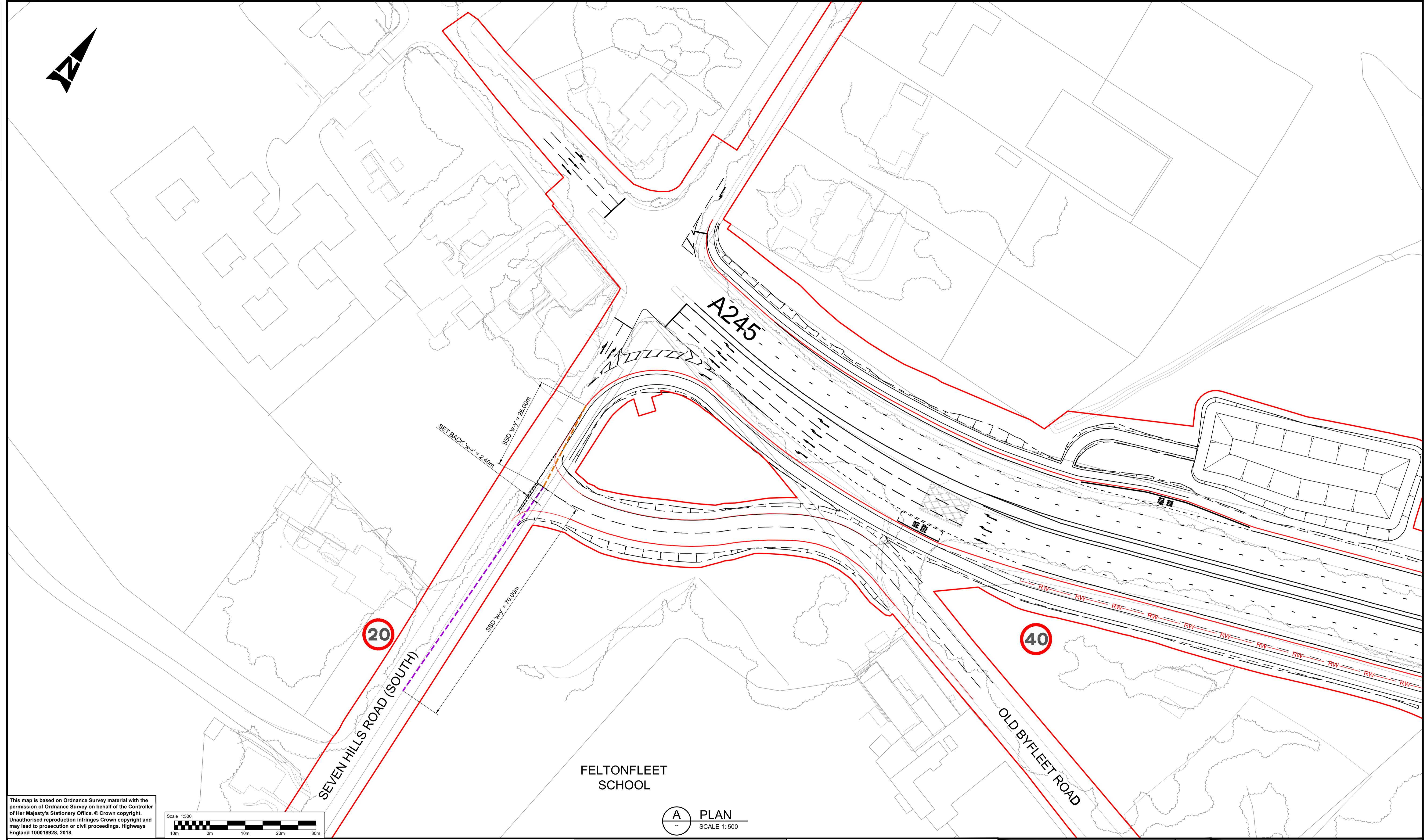
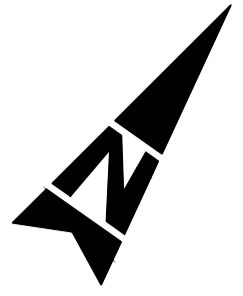
Client: **Working on behalf of highways england**

Drawing Title	A3 NORTHBOUND OFF SLIP TO A245 WESTBOUND FORWARD VISIBILITY SPLAYS		
Drawing Number	Project	Originator	Volume
HE551522	XX	ATK	HGN
		- SK - CH - 000037	
Location	Type	Role	Number
A1	Scale: 1:500	Project Ref. No.: 5158141	Sheet: 1 of 1
Original Size:	Rev:	C01	

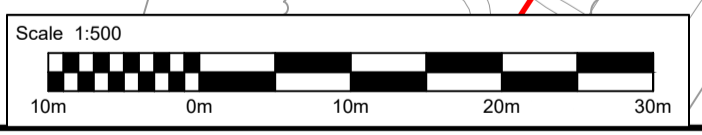
DO NOT SCALE

Millimetres

0 10 100



This map is based on Ordnance Survey material with the permission of Ordnance Survey on behalf of the Controller of Her Majesty's Stationary Office. © Crown copyright. Unauthorised reproduction infringes Crown copyright and may lead to prosecution or civil proceedings. Highways England 100018926, 2018.



FELTONFLEET SCHOOL

A PLAN
SCALE 1: 500

NOTES:

- ALL DIMENSIONS ARE IN METRES UNLESS OTHERWISE STATED.
- ALL VISIBILITY SPLAYS ARE SHOWN IN ACCORDANCE WITH THE DESIGN MANUAL FOR ROADS AND BRIDGES (DMRB) CD 123 AND OR THE MANUAL FOR STREETS.

LEGEND:

- JUNCTION VISIBILITY SPLAY FOR A DESIGN SPEED OF 50kph IN ACCORDANCE WITH DMRB CD 123.
- JUNCTION VISIBILITY SPLAY FOR A 20mph ROAD IN ACCORDANCE WITH THE MANUAL FOR STREETS.
- DCO BOUNDARY.

SAFETY, HEALTH AND ENVIRONMENTAL INFORMATION							
In addition to the hazards/risks normally associated with the types of work detailed on this drawing, note the following significant residual risks (Reference shall also be made to the design hazard log).							
Construction							
NONE							
Maintenance / Cleaning							
NONE							
Use							
NONE							
Decommissioning / Demolition							
NONE							

Description	Status	Revision	Drawn	Checked	Reviewed	Authorised	Issue Date
Construction							
Maintenance / Cleaning							
Use							
Decommissioning / Demolition							
SUBMITTED FOR DEADLINE 4							
Description	Status	Revision	Drawn	Checked	Reviewed	Authorised	Issue Date
	A1	C01	SB	LH	RM	GB	11/02/20

Drawing Suitability: **APPROVED - PUBLISHED** Status: **A1**

ATKINS Epsom Gateway, Ashley Avenue, Epsom, Surrey, KT18 5AL. Tel: +44 (0)1372 726140, Fax: +44 (0)1372 740055, www.atkinsglobal.com

SNC-LAVALIN Member of the SNC-Lavalin Group

Copyright © Atkins Limited (2018)

Client: **Working on behalf of highways england**

Project Title: **M25 junction 10/A3 Wisley interchange**

Drawing Title: **NEW FELTON FLEET ACCESS JUNCTION WITH SEVEN HILLS ROAD SOUTH VISIBILITY SPLAYS**

Drawing Number: **HE551522** | Originator: **ATK** | Volume: **HGN**

Project: **XX** | Role: **- SK - CH - 000038**

Location: | Type: | Role: | Number: |

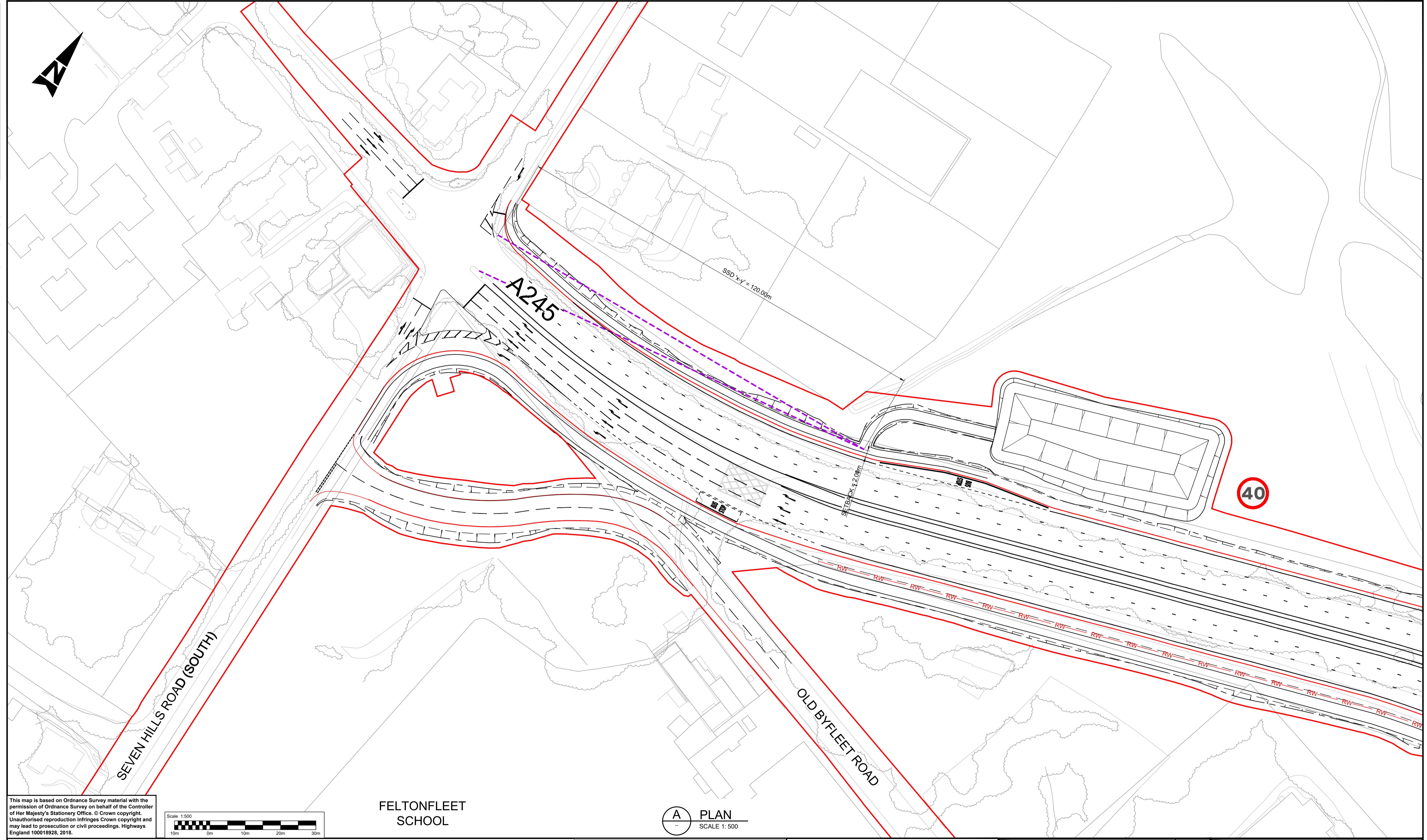
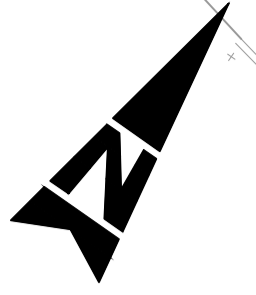
Original Size: **A1** | Scale: 1:500 | Project Ref. No.: **5158141** | Sheet: **1 of 1** | Rev: **C01**

DO NOT SCALE

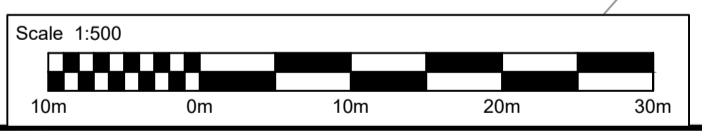
100
Millimetres

10

0



This map is based on Ordnance Survey material with the permission of Ordnance Survey on behalf of the Controller of Her Majesty's Stationery Office. © Crown copyright. Unauthorised reproduction infringes Crown copyright and may lead to prosecution or civil proceedings. Highways England 100018926, 2018.



FELTONFLEET SCHOOL

A PLAN
SCALE 1:500

NOTES:

- ALL DIMENSIONS ARE IN METRES UNLESS OTHERWISE STATED.
- ALL VISIBILITY SPLAYS ARE SHOWN IN ACCORDANCE WITH THE DESIGN MANUAL FOR ROADS AND BRIDGES (DMRB) CD 123.

LEGEND:

- JUNCTION VISIBILITY SPLAY FOR A DESIGN SPEED OF 70kph IN ACCORDANCE WITH DMRB CD 123.
- DCO BOUNDARY.

SAFETY, HEALTH AND ENVIRONMENTAL INFORMATION						
Description In addition to the hazards/risks normally associated with the types of work detailed on this drawing, note the following significant residual risks (Reference shall also be made to the design hazard log).						
Construction NONE						
Maintenance / Cleaning NONE						
Use NONE						
Decommissioning / Demolition NONE						

Description	Status	Revision	Drawn	Checked	Reviewed	Authorised	Issue Date
Construction							
Maintenance / Cleaning							
Use							
Decommissioning / Demolition							
Description SUBMITTED FOR DEADLINE 4							
Status	A1	Revision	C01	Drawn	SB	Checked	LH
				Reviewed	RM	Authorised	GB
							Issue Date 11/02/20

Drawing Suitability: **APPROVED - PUBLISHED** | Status: **A1**

ATKINS Epsom Gateway, Ashley Avenue, Epsom, Surrey, KT18 5AL
Tel: +44 (0)1372 726140, Fax: +44 (0)1372 740055, www.atkinsglobal.com

Copyright © Atkins Limited (2018)

Client: **Working on behalf of highways england**

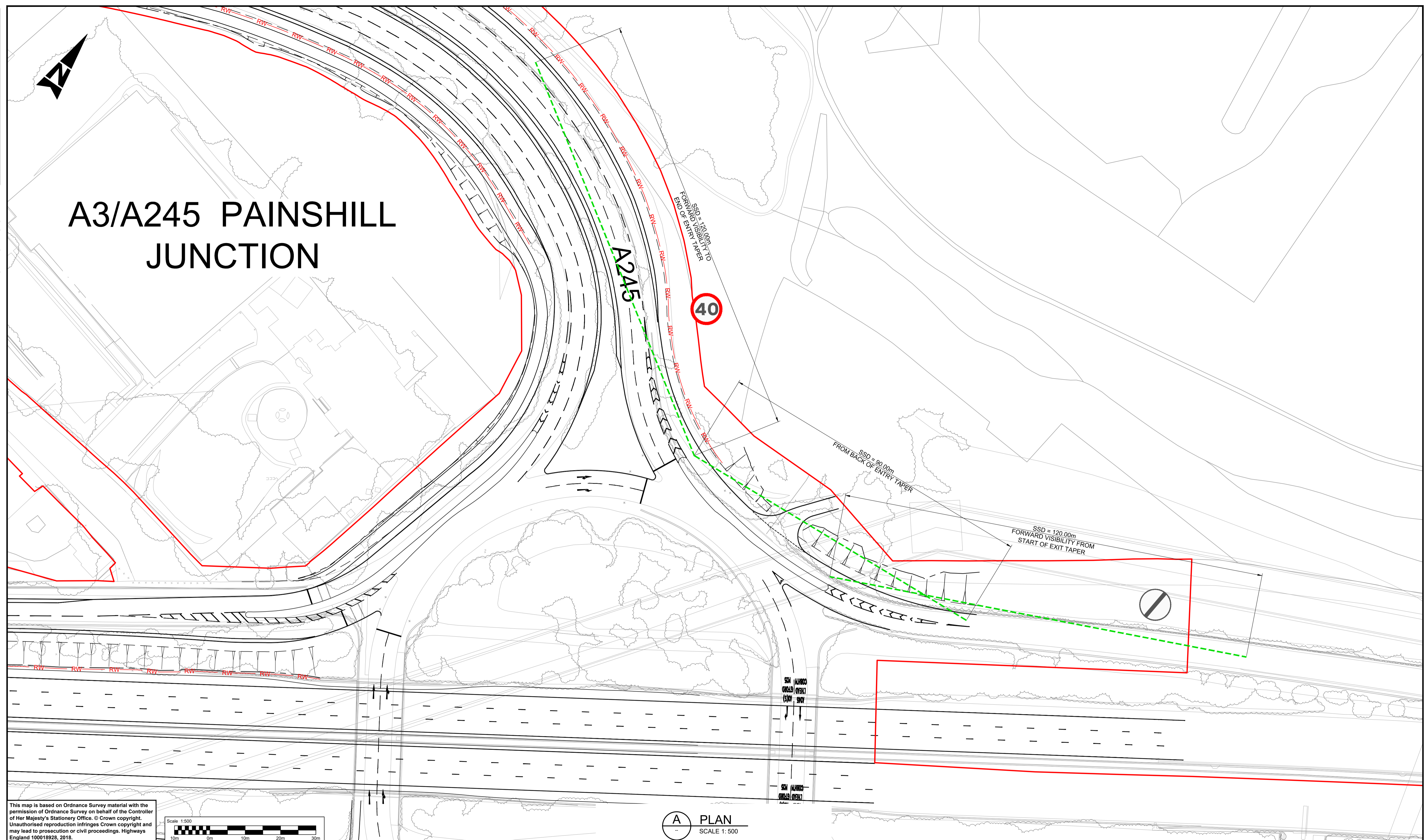
Project Title M25 junction 10/A3 Wisley interchange	
Drawing Title NEW DRAINAGE POND ACCESS JUNCTION WITH A245 EASTBOUND VISIBILITY SPLAYS	
Drawing Number HE551522	Originator ATK
Project XX	Volume HGN
Location	Type - SK - CH - 000039
Original Size A1	Scale: 1:500
Project Ref. No. 5158141	Sheet: 1 of 1
Rev: C01	

DO NOT SCALE

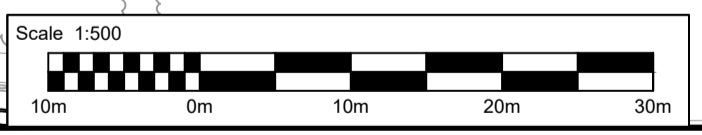
Millimetres



A3/A245 PAINSHILL JUNCTION



This map is based on Ordnance Survey material with the permission of Ordnance Survey on behalf of the Controller of Her Majesty's Stationery Office. © Crown copyright. Unauthorised reproduction infringes Crown copyright and may lead to prosecution or civil proceedings. Highways England 100018926, 2018.



A PLAN
SCALE 1:500

NOTES:

- ALL DIMENSIONS ARE IN METRES UNLESS OTHERWISE STATED.
- ALL VISIBILITY SPLAYS ARE SHOWN IN ACCORDANCE WITH THE DESIGN MANUAL FOR ROADS AND BRIDGES (DMRB) CD 109 & CD 116.

LEGEND:

- FORWARD VISIBILITY SPLAY FOR A DESIGN SPEED OF 70kph IN ACCORDANCE WITH DMRB CD 109 & CD 116.
- DCO BOUNDARY.

SAFETY, HEALTH AND ENVIRONMENTAL INFORMATION	
Description	In addition to the hazards/risks normally associated with the types of work detailed on this drawing, note the following significant residual risks (Reference shall also be made to the design hazard log).
Construction	NONE
Maintenance / Cleaning	NONE
Use	NONE
Decommissioning / Demolition	NONE

Description	Status	Revision	Drawn	Checked	Reviewed	Authorised	Issue Date
Construction							
Maintenance / Cleaning							
Use							
Decommissioning / Demolition							

Drawing Suitability: **APPROVED - PUBLISHED** | Status: **A1**

ATKINS Epsom Gateway, Ashley Avenue, Epsom, Surrey, KT18 5AL. Tel: +44 (0)1372 726140, Fax: +44 (0)1372 740055, www.atkinsglobal.com

Copyright © Atkins Limited (2018)

Client: **Working on behalf of highways england**

Project Title:	M25 junction 10/A3 Wisley interchange
Drawing Title:	A245 EASTBOUND TO A3 NORTHBOUND ON-SLIP FORWARD VISIBILITY SPLAYS
Drawing Number:	HE551522
Project:	XX
Originator:	ATK
Volume:	HGN
Type:	- SK - CH - 000040
Original Size:	A1
Scale:	1:500
Project Ref. No.:	5158141
Sheet:	1 of 1
Rev:	C01

© Crown copyright (2020).

You may re-use this information (not including logos) free of charge in any format or medium, under the terms of the Open Government Licence. To view this licence:

visit www.nationalarchives.gov.uk/doc/open-government-licence/

write to the Information Policy Team, **The National Archives, Kew, London TW9 4DU**,
or email psi@nationalarchives.gsi.gov.uk.

Printed on paper from well-managed forests and other controlled sources.

Registered office Bridge House, 1 Walnut Tree Close, Guildford GU1 4LZ
Highways England Company Limited registered in England and Wales number 09346363